

Multichannel Pump Head

Experimental conditions:standard atmospheric pressure, room temperature at 20°C,the liquid is pure water, no pressure, no suction and lift.
Note: Actually, it is affected by many factors such as transmission medium, inlet and outlet pressure, hose material and error, working environment, etc. This data is for reference only.

New generation multichannel type pump head Technical Specifications									
Channel number	1	2	3	4	5	6	8	10	12
Cartridge material	POM/PVDF								
Rollers material	304/316 stainless steel material								
Rollers number	8 rollers								
Tubing	Speed	Flow rate of pump head with 8 rollers (mL/min)	Tubing maximum pressure (Mpa)						
			Continuous	Intermittent					
1 × 1	0.1~150rpm	0.0049~7.38	0.1	0.1					
2 × 1		0.0200~30.02							
2.4 × 0.8		0.0273~41.02							
3 × 1		0.0345~51.79							
0.13 × 0.86		0.0002~0.25							
0.19 × 0.86		0.0003~0.28							
0.25 × 0.86		0.0004~0.57							
0.51 × 0.86		0.0016~2.42							
0.89 × 0.86		0.0046~6.84							
1.14 × 0.86		0.0074~11.12							
1.42 × 0.86		0.0107~16.1							
2.06 × 0.86		0.0206~30.95							
2.79 × 0.86		0.0329~49.39							

Multichannel Pump Head-MC Series

POM Material &PVDF Material



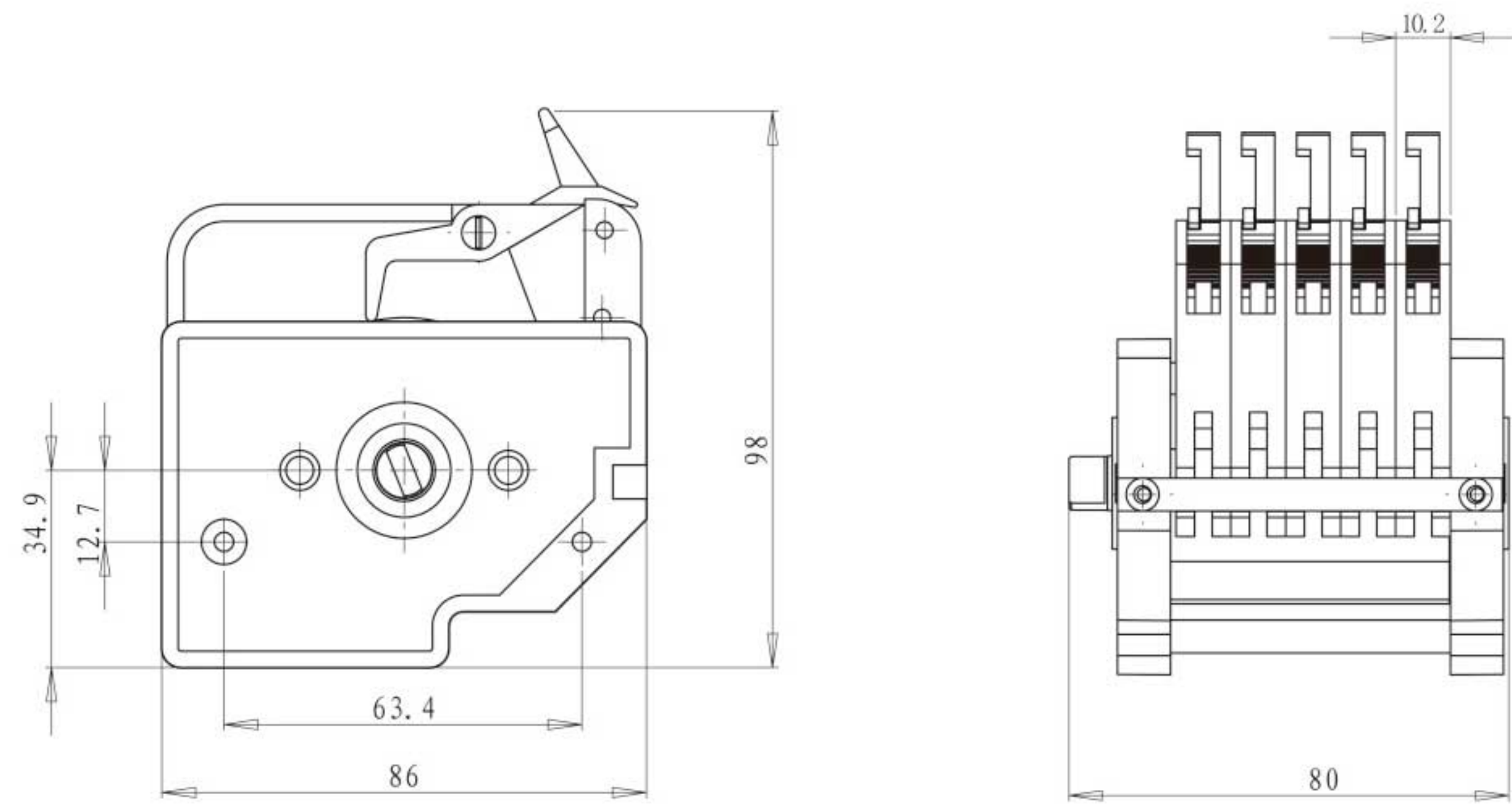
Typical Application

- | Support blood sugar analytical device.
- | Support ammonian analytical instrument.

Product Introduction

MC series new generation multichannel pump head with unique cam structure, make it much easier to operate. It is designed for small flow rates and multichannel transfer. Comparing with traditional DG pump head, it has particular cam design for micro adjustment occlusion, and also for opening the cartridge from the top. 304 stainless steel rollers assembly include two structures of 6 rollers and 10 rollers. Install silicone tubing and TYGON series imported tubing. It is widely used for supporting analytical instruments.

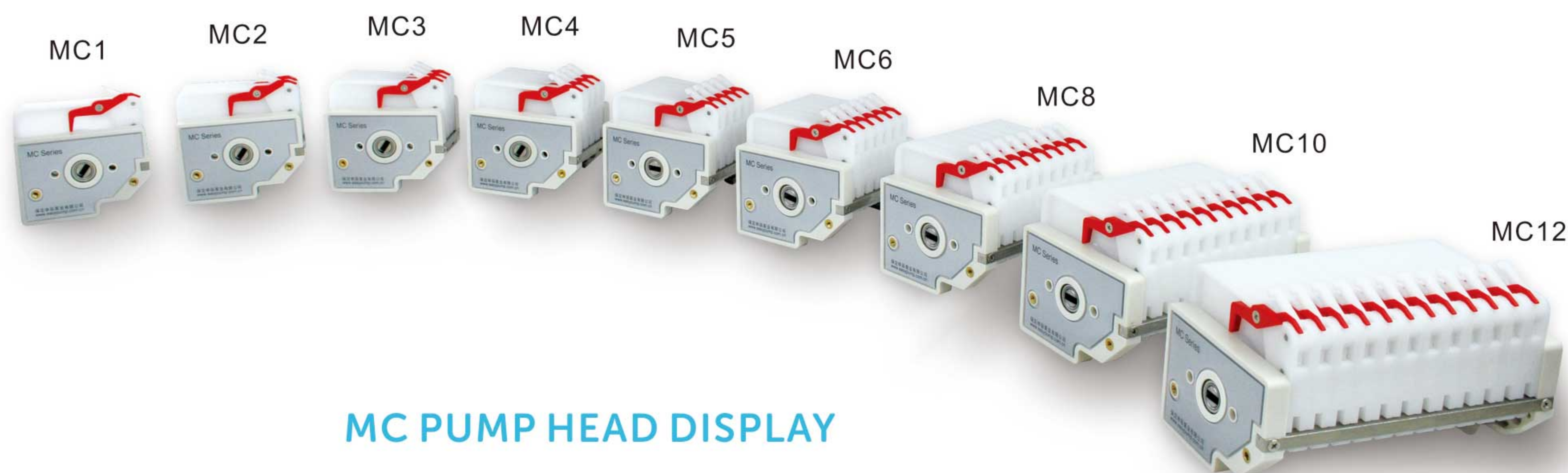
Dimension Drawing(Unit: mm)



Note: Increasing or reducing one channel,the pump head size need to increase or reduce the thickness of one cartridge.



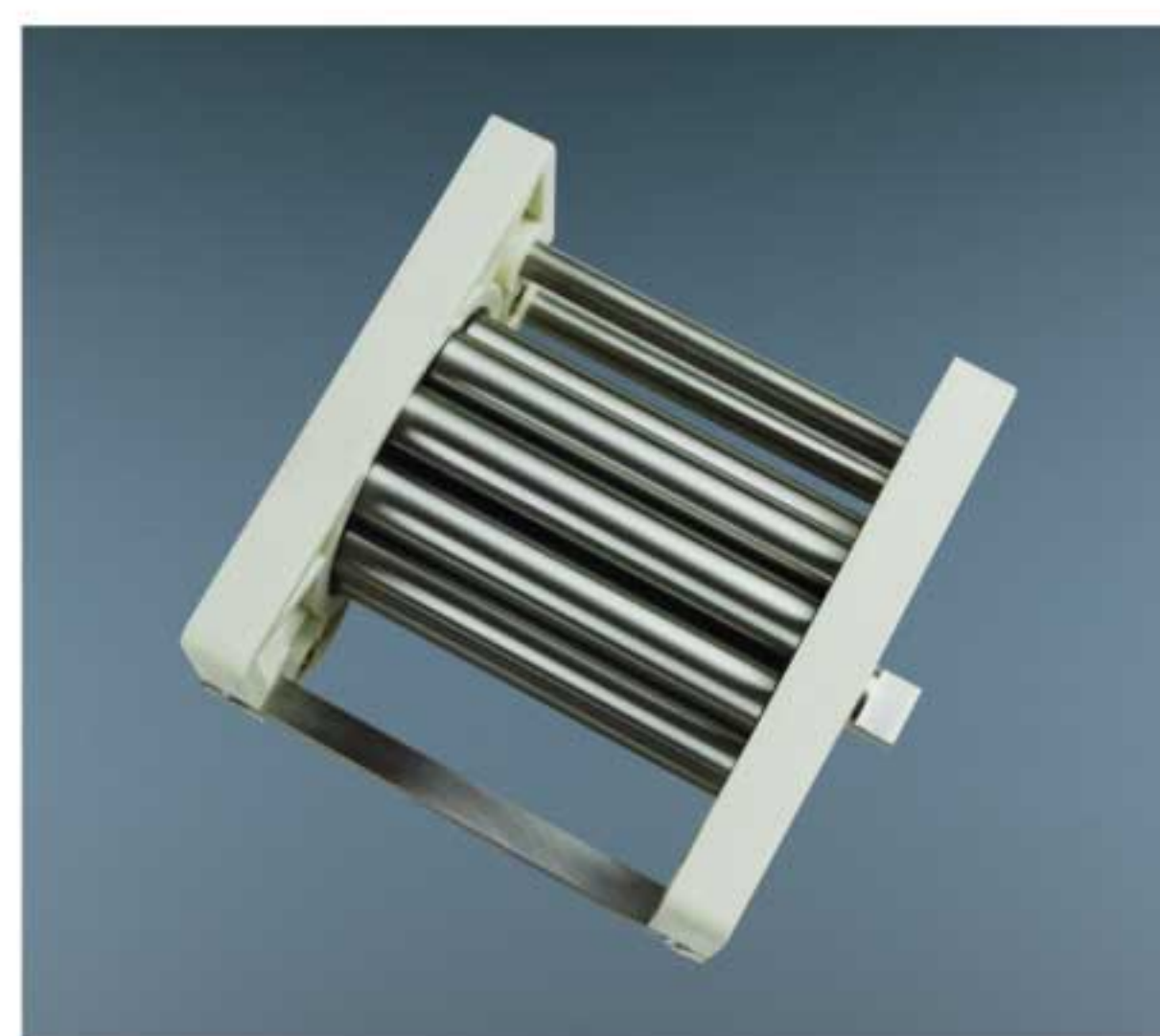
Multichannel Pump Head-MC Series



MC PUMP HEAD DISPLAY

Tubing Installation Procedure

Roller assembly
(10 roller)



A. Turn the spanner clockwise to take it off from the lever.



B. After that, the cartridge can be taken out lightly.



C. Install the tubing and confirm the working position between two adjacent clamps.



D. Embed the cartridge and press it lightly to reach the working position.



E. Turn the spanner counter-clockwise to make it reach the lever.



F. Multichannel pump heads and tubing drawing.



Experimental conditions:standard atmospheric pressure, room temperature at 20°C,the liquid is pure water, no pressure, no suction and lift.

Note: Actually, it is affected by many factors such as transmission medium, inlet and outlet pressure, hose material and error, working environment, etc. This data is for reference only.

Note: Actual note: It is affected by many factors such as transmission medium, inlet and outlet pressure, hose material and error, working environment, etc. This data is for reference only.

MC Technical Specifications									
Channel number	1	2	3	4	5	6	8	10	12
Cartridge material	POM/PVDF								
Rollers material	304/316 stainless steel material								
Rollers number	6 rollers, 10 rollers								
Tubing	Speed	Flow rate of pump head with 10 rollers (mL/min)	Flow rate of pump head with 6 rollers (mL/min)	Tubing maximum pressure (Mpa)					
				Continuous	Intermittent				
1 × 1	0.1~150rpm	0.0046~6.90	0.0053~7.95	0.1	0.1				
2 × 1		0.0156~23.40	0.021~31.35						
2.4 × 0.8		0.0212~31.80	0.0274~41.10						
3 × 1		0.0324~48.60	0.043~64.95						
0.13 × 0.86		0.00016~0.24	0.000185~0.277						
0.19 × 0.86		0.0002~0.27	0.0003~0.420						
0.25 × 0.86		0.0003~0.480	0.0005~0.720						
0.51 × 0.86		0.0014~2.10	0.0020~3.0						
0.89 × 0.86		0.0039~5.85	0.0057~8.55						
1.14 × 0.86		0.0066~9.90	0.0090~13.5						
1.52 × 0.86		0.0093~13.95	0.0133~19.95						
2.06 × 0.86		0.015~22.50	0.0250~37.5						
2.79 × 0.86		0.024~35.85	0.037~55.50						

